



Standard Test Method for 90 Degree Peel Resistance of Adhesives¹

This standard is issued under the fixed designation D6862; the number immediately following the designation indicates the year of original adoption or, in the case of revision, the year of last revision. A number in parentheses indicates the year of last reapproval. A superscript epsilon (ϵ) indicates an editorial change since the last revision or reapproval.

INTRODUCTION

The purpose of this test method is to provide for the determination of the resistance-to-peel strength of adhesives when surfaces joined by an adhesive are separated by applying a force to one of the surfaces at a 90 degree angle. The accuracy of the results of strength tests of adhesive bonds will depend on the conditions under which the bonding process is carried out. Unless otherwise agreed upon between the manufacturer and the purchaser, the bonding conditions shall be prescribed by the manufacturer of the adhesive. In order to ensure that complete information is available to the individual conducting the tests, the manufacturer of the adhesive shall furnish numerical values and other specific information for each of the following variables:

(1) Procedure for preparation of the surfaces prior to application of the adhesive, the cleaning and drying of surfaces, and special surface treatments, which are not specifically limited by the pertinent test method.

(2) Complete mixing directions for the adhesive.

(3) Conditions for the application of the adhesive, including the rate of spread or thickness of the film, number of coats to be applied, whether to one or both of the surfaces, and the conditions of drying.

(4) Assembly conditions before the application of pressure, including room temperature and length of time.

(5) Curing conditions, including the amount of pressure to be applied, the length of time under pressure, and the temperature of the assembly when under pressure. It should be stated whether this temperature is that of the glue line or of the atmosphere at which the assembly is to be maintained.

(6) Conditioning procedure before testing, unless a standard procedure is specified, including length of time and relative humidity.

Range may be prescribed for any variable provided it is acceptable to both the manufacturer and the purchaser of the adhesive.

1. Scope*

1.1 This test method covers the determination of the resistance-to-peel strength of an adhesive bond between one rigid adherend and one flexible adherend when tested at an angle of approximately 90 degrees under specified conditions of preparation and testing.

1.2 A variation in thickness of the adherends will generally influence test values. For this reason, the thickness of the

adherends used to make the test specimens shall be specified in the material specification. When no thickness is specified, the flexible adherend shall be 0.60 mm (0.025 in.) thick and the rigid adherend shall be 1.60 mm (0.060 in.) thick.

NOTE 1—A heavy fabric, such as canvas, has been used as a flexible adherend.

1.3 The values stated in SI units are to be regarded as the standard. The values given in parentheses are for information only.

1.4 *This standard does not purport to address all of the safety concerns, if any, associated with its use. It is the responsibility of the user of this standard to establish appropriate safety and health practices and determine the applicability of regulatory limitations prior to use.*

¹ This test method is under the jurisdiction of ASTM Committee D14 on Adhesives and is the direct responsibility of Subcommittee D14.10 on Working Properties.

Current edition approved Dec. 1, 2011. Published January 2012. Originally approved in 2003. Last previous edition approved in 2004 as D6862 – 04. DOI: 10.1520/D6862-11.

*A Summary of Changes section appears at the end of this standard.

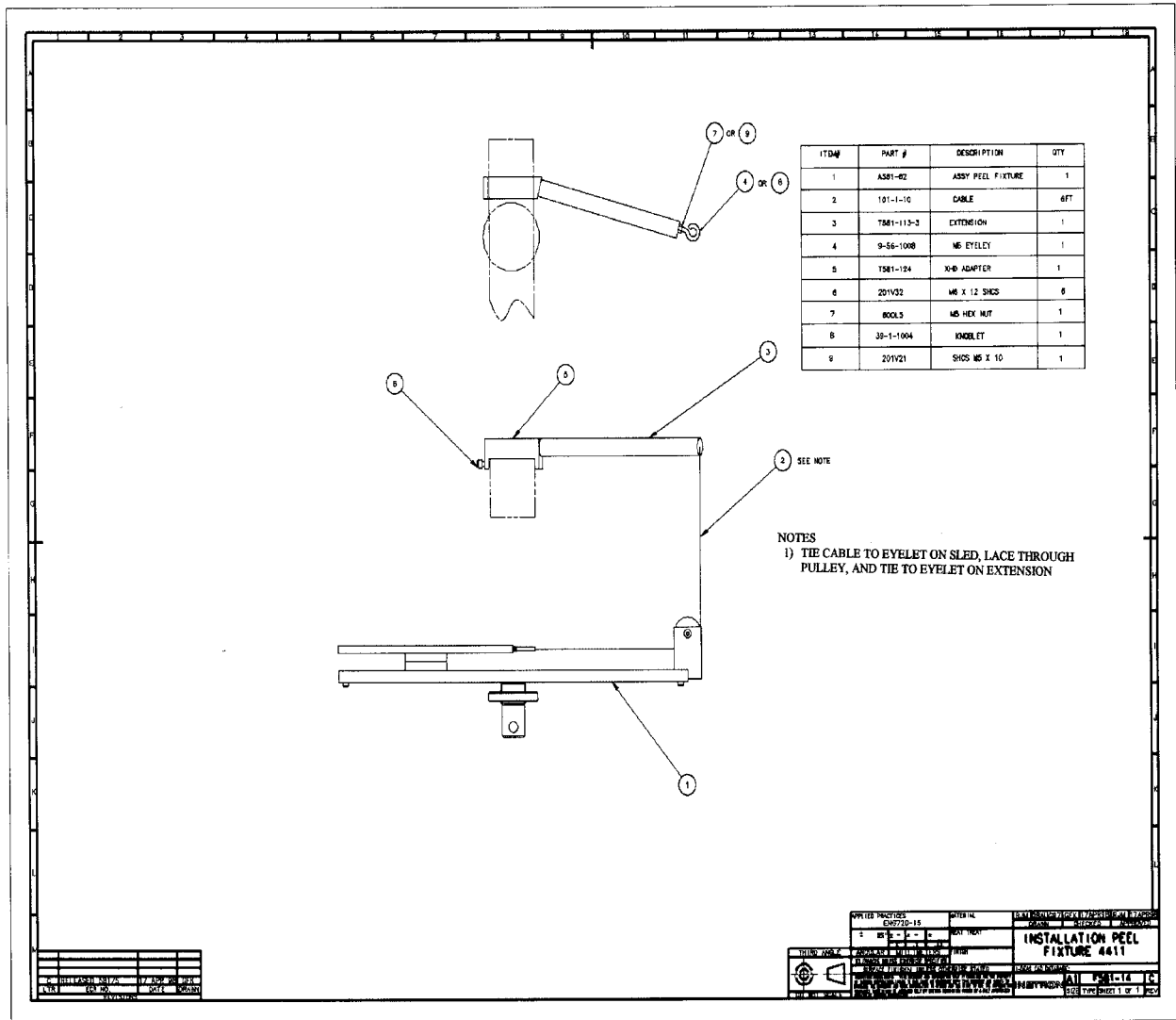


FIG. 2 Assembled Sample Test Apparatus

maintained between the flexible adherent and the fixed adherent. The platform shall have means for clamping the fixed adherent to the surface. See Fig. 2 and Fig. 3

7. Sample Preparation

7.1 Laminated test panels (see Fig. 4) consist of two adherends properly prepared and bonded together in accordance with the adhesive manufacturer’s recommendations or as required by a product performance specification.

7.2 Bend the unbonded end of the flexible adherend perpendicular to the rigid adherend for clamping in the grip of the testing machine. Test four specimens per aging condition. Typical sample aging conditions call for testing of panels at 4 h, 24 h, 7 days, and 14 days after assembly.

NOTE 2—Direct comparison of different adhesives may be made only when specimen construction and test conditions are identical.

NOTE 3—A specimen width agreed upon by the manufacturer and user may be used, provided the test machine grip and peel test fixtures are of ample width to apply load uniformly across the width of the adherends.

8. Test Method

8.1 Insert the test specimen into the peel test fixture as shown in Fig. 3, with the unbonded end of the flexible adherend gripped in the test machine jaw. Peel the specimen at a constant crosshead speed of 254 mm/min (10 in./min). Other crosshead speeds may be used as required by a particular test specification or at a speed agreed upon by the manufacturer. If the back up plate bends or is distorted during the test, it is recommended that the specimen be redesigned with a back up member stiff enough to ensure even peel.

8.2 During the resistance-to-peel test, make an autographic recording of load versus head movement (load versus distance peeled).

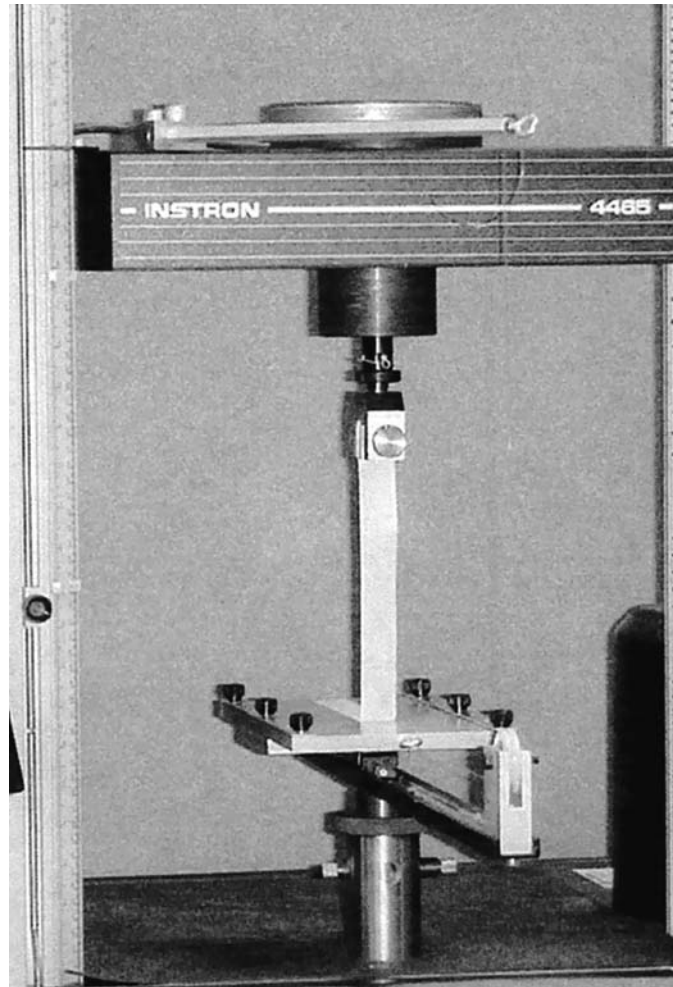


FIG. 3 Peel Test Unit

8.3 Record the load over at least a 76 mm (3 in.) separation length of the bond line or as agreed to by the adhesive manufacturer and the end user, disregarding the first 25 mm (1 in.) of peel.

9. Calculation

9.1 Determine from the autographic curve or at least 76 mm (3 in.) of peeling (disregarding the first 25 mm (1 in.)), the average resistance-to-peel strength in kilonewtons per meter (pounds-force per inch) of the specimen width required to separate the adherends. The average may be calculated as the average of load readings taken at fixed increments of crosshead motion. For example, load may be recorded at each 12.7 mm (0.5 in.) interval of adherend separation until at least six readings have been attained.

10. Report

10.1 Report the following information:

10.1.1 Complete identification of the adhesive tested including type, source, manufacturer's code number, batch or lot number, form, etc.

10.1.2 Complete identification of the adherends used, including material thickness, surface preparation, and orientation.

10.1.3 Description of bonding process, including method of application of adhesive, glue line thickness, press pressure and time, assembly methods, drying or pre-curing conditions (where applicable), curing time, temperature, and relative humidity.

10.1.4 The average wet film and dry film thickness of the adhesive layer shall be recorded, where possible. The method of obtaining the thickness of the adhesive layer shall be described including procedure, location of measurements, and range of measurements.

10.1.5 Complete description of the test specimen, including dimensions and construction of the test specimen, conditions used for cutting individual test specimens, number of test panels represented, and number of individual test specimens.

10.1.6 Conditioning procedure prior to testing.

10.1.7 Testing temperature.

10.1.8 Type of test machine and crosshead separation rate used.

10.1.9 Method of recording load and determining average load.

10.1.10 Average, maximum, and minimum resistance-to-peel load values for each individual specimen.

10.1.11 Average resistance-to-peel strength in kilonewtons per meter (pounds-force per inch) of width for each combination of materials and constructions under test.

Sample size is 102MM by 305MM (approximately 4" by 12"). Exact size of samples to be determined by manufacturer and consumer.

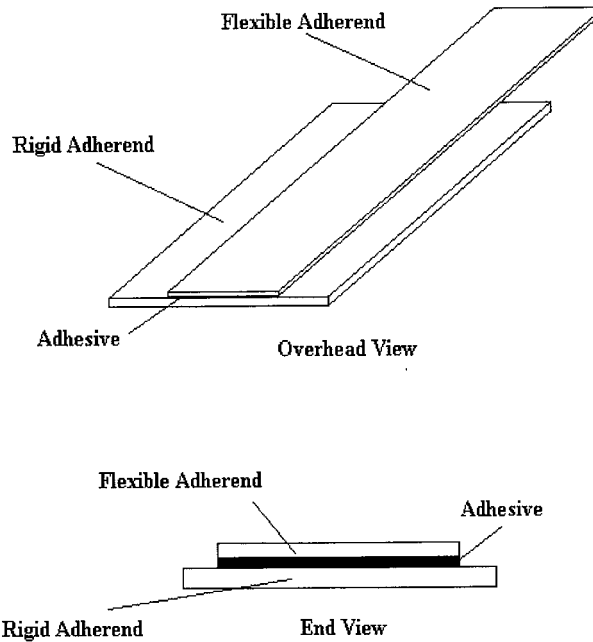


FIG. 4 Peel Test Sample

TABLE 1 Resistance-to-Peel Precision Information

	Average	Sr	SrSE	SR	SRSE	r	R
25 mm per min. (1 in. per min.)							
Carpet to plywood kN/m (lbf/in.)	0.53 (3)	0.11 (0.6)	0.05 (0.27)	0.11 (0.6)	0.05 (0.27)	0.31 (1.7)	0.31 (1.7)
Duck cloth to plywood kN/m (lbf/in.)	0.88 (5)	0.16 (0.9)	0.07 (0.40)	0.28 (1.6)	0.13 (0.72)	0.45 (2.5)	0.78 (4.5)
250 mm per min. (10 in. per min.)							
Carpet to plywood kN/m (lbf/in.)	2.28 (13)	0.26 (1.5)	0.12 (0.67)	0.30 (1.7)	0.13 (0.76)	0.73 (4.2)	0.84 (4.8)
Duck cloth to plywood kN/m (lbf/in.)	2.98 (17)	0.30 (1.7)	0.13 (0.76)	0.30 (1.7)	0.13 (0.76)	0.84 (4.8)	0.82 (4.8)

where:

Sr = repeatability standard deviation

SR = reproducibility standard deviation

r = 95 % repeatability limit (within a laboratory)

R = 95 % reproducibility limit (between laboratories)

SE = standard error of the mean = standard deviation/square root of number of labs

10.1.12 Type of failure, that is, cohesive failure within the adhesive or adherend or adhesion to the adherend, or combination thereof, for each individual specimen.

11. Precision and Bias ³

11.1 The precision of this test is a function of the properties of the cured bondline.

11.2 The resistance-to-peel strength precision information given in Table 1 is expressed in kN/m and lbf/in. for the average of three 90 degree peel values determined for one adhesive by two different laboratories at a cross head speed of 25 mm per minute (1 inch per minute) and three different laboratories at 250 mm per minute (10 inches per minute). The testing was performed for both carpet to plywood and duck cloth to plywood.

11.2.1 The table was calculated using the relationship:
 $95\% \text{ limit} = 2.8 \times \text{standard deviation}$.

³ Supporting data have been filed at ASTM International Headquarters and may be obtained by requesting Research Report RR:D14-1011.

11.3 The term repeatability and reproducibility limits are used as specified in Practice **E177**.

11.4 *Bias*—No information can be presented in the bias of the procedure in Test Method D6862 for measuring adhesive shear strength because no material having an accepted reference value is available.

12. Keywords

12.1 adhesives; assemblies; bonds; laminates; peel

SUMMARY OF CHANGES

Committee D14 has identified the location of selected changes to this standard since the last issue (D6862 - 04) that may impact the use of this standard. (Approved December 1, 2011.)

(1) Hard conversions have been changed to soft conversions through the text and in **Table 1**. (2) **Table 1** typographical errors have been corrected.

ASTM International takes no position respecting the validity of any patent rights asserted in connection with any item mentioned in this standard. Users of this standard are expressly advised that determination of the validity of any such patent rights, and the risk of infringement of such rights, are entirely their own responsibility.

This standard is subject to revision at any time by the responsible technical committee and must be reviewed every five years and if not revised, either reapproved or withdrawn. Your comments are invited either for revision of this standard or for additional standards and should be addressed to ASTM International Headquarters. Your comments will receive careful consideration at a meeting of the responsible technical committee, which you may attend. If you feel that your comments have not received a fair hearing you should make your views known to the ASTM Committee on Standards, at the address shown below.

This standard is copyrighted by ASTM International, 100 Barr Harbor Drive, PO Box C700, West Conshohocken, PA 19428-2959, United States. Individual reprints (single or multiple copies) of this standard may be obtained by contacting ASTM at the above address or at 610-832-9585 (phone), 610-832-9555 (fax), or service@astm.org (e-mail); or through the ASTM website (www.astm.org). Permission rights to photocopy the standard may also be secured from the ASTM website (www.astm.org/COPYRIGHT/).